

Tejido inteligente autolimpiable que cuida tu salud
Self-cleaning smart fabric that takes care of your health



Elimina suciedad y manchas orgánicas solo con la luz del sol

It removes organic dirt and stains just with sunlight



Elimina hongos, bacterias y virus

It eliminates fungi, bacteria and viruses



Tejido Autolimpiable

Self-cleaning fabric



Repele los malos olores

It repels unpleasant odours



Elimina los ácaros en los textiles

It kills mites in fabrics



Purifica el aire

It purifies air



Tejido muy resistente, evita la degradación y la decoloración

Highly-durable fabric that prevents degradation and fading



Antiestático

Antistatic



Hidrófugo

water repellent



Protección UV

UV protection



ARTÍCULO / ARTICLE
DABAS - BREEZE - KIEL

Mantenimiento Fácil		Easy Care	
Hilo:	100% Acrílico tintado en masa	Yarn:	100% Acrylic solution dyed
Peso x m²:	400 gr (± 10%)	Weight x sqm:	400 gr (± 10%)
Urdimbre:	30 Hilo x cm NM 2/40000	Warp:	30 yarns x cm NM 2/40000
Trama:	14 Pasadas x cm NM 2/40000	Weft:	14 yarns x cm NM 2/40000
Martindale:	60.000 ciclos	Martindale:	60.000 cycles
Columna de agua:	150ml	Water column:	150ml
Acabados:	Repelente al agua con tecnología nanopartículas Anti bacterias. Anti moho.	Finishes:	Water repellent with nanoparticle technology Anti bacteria Anti mold
Tratamientos:	Inhibición activo de virus (covid-19) Autolimpieza Purificador del aire eliminando contaminación Protección UV Eliminación de olores Efecto bactericida Antiestático	Tratamientos:	Active inhibition of viruses (covid-19) Self-cleaning Air purifier eliminating pollution UV protection Odor elimination Bactericide effect Antistatic
Análisis		Analysis	
Ancho Pieza	140 cm	Width of Roll	140 cm
Largo Pieza	45 m	Length of roll	45 m
Repelencia al Aceite UNE-ISO14419: 2010	6 Sobre un máximo de 8	Oil repellence UNE-ISO14419: 2010	6 over a maximum of 8
Repelencia al Agua Método M test II	10 Sobre un máximo de 10	Water Repellence M test II	10 over a maximum of 10
Solidez del Color al Agua clorada (100 mg x litro) UNE EN ISO 105 E 03	5 Sobre un máximo 5	Colour fastness to Chloride water (100 mg x litre) UNE EN ISO 105 E 03	5 over a maximum of 5
Solidez del Color al Agua de Mar UNE EN ISO 105 E 02	5 Sobre un máximo 5	Colour fastness to Sea Water UNE EN ISO 105 E 02	5 over a maximum of 5
Solidez de las texturas a la luz UNE EN ISO 13934 105 B	7/8 Sobre un máximo de 8 (Escala de Azules) 4/5 Sobre un máximo de 5 (Escala Grises)	Colour fastness to light UNE EN ISO 13934 105 B	7/8 over a maximum of 8 (Blue Scale) 4/5 over a maximum of 5 (Grey Scale)

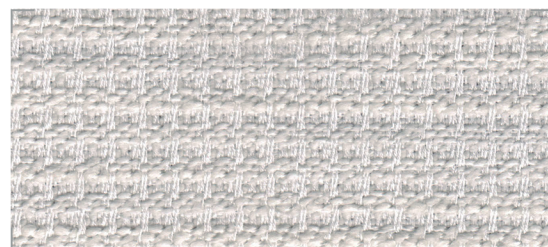


ARTÍCULO / ARTICLE
DABAS - BREEZE - KIEL
 outdoor & indoor fabrics

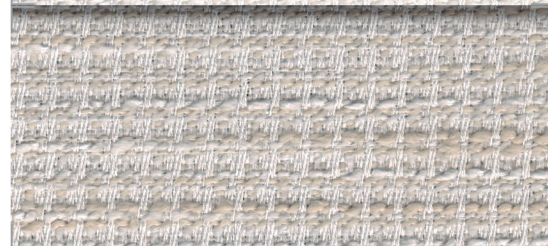
ARTÍCULO / ARTICLE
DABAS - BREEZE - KIEL
 outdoor & indoor fabrics



Dabas AT 1101



Dabas AT 1120



Breeze AT 101



Dabas AT 101



Kiel AT 101



Breeze AT 102



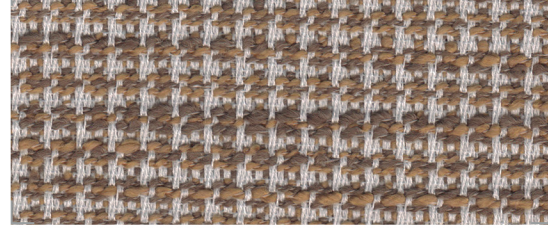
Dabas AT 201



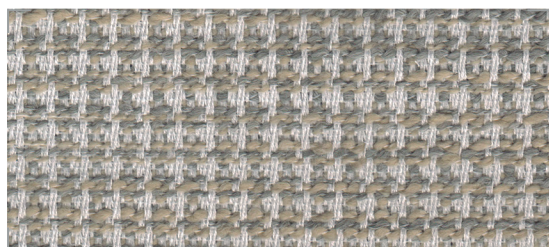
Breeze AT 201



Dabas AT 1125



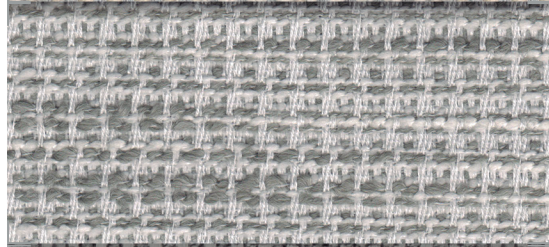
Dabas AT 1128



Breeze AT 302



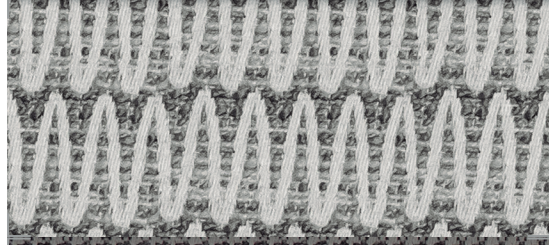
Dabas AT 1126



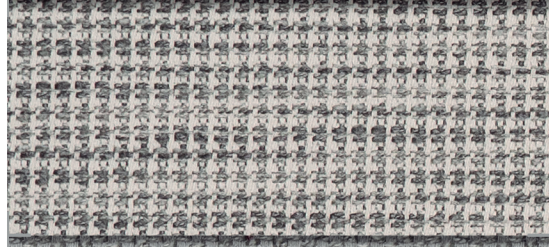
Breeze AT 103



Kiel AT 104



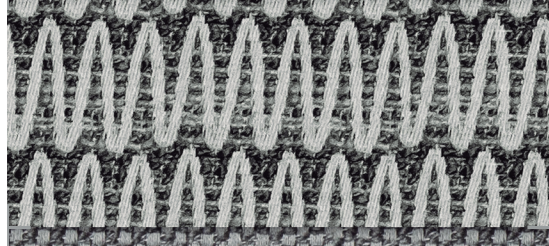
Dabas AT 104



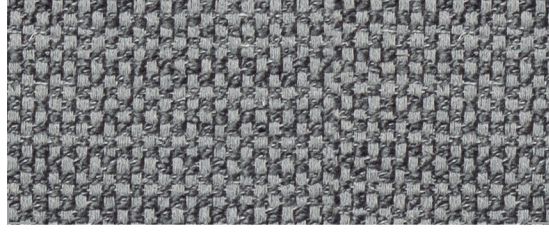
Breeze AT 303



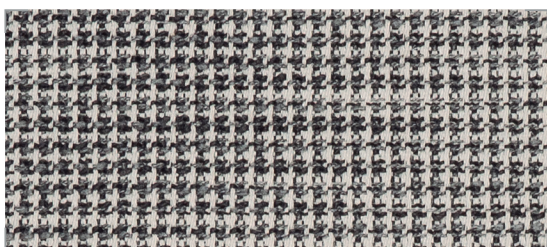
Kiel AT 105



Breeze AT 304



Dabas AT 105



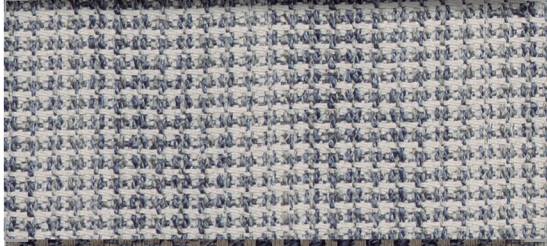
Breeze AT 305



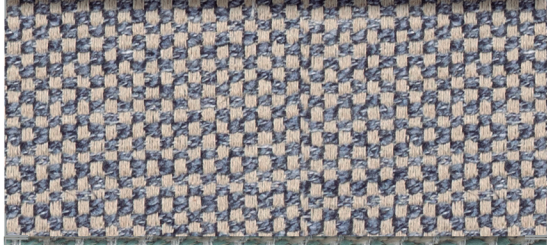
Kiel AT 107



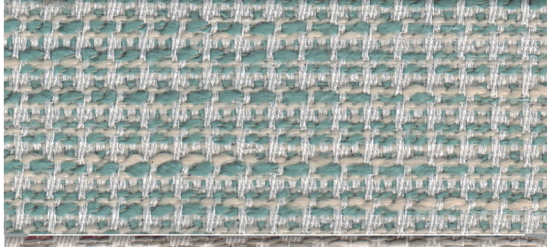
Dabas AT 107



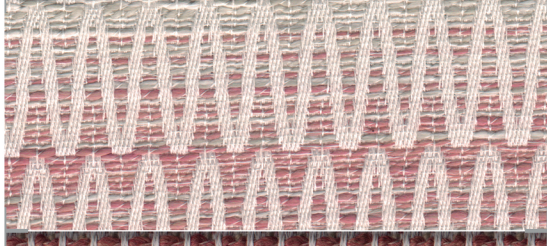
Breeze AT 203



Dabas AT 1127



Kiel AT 123



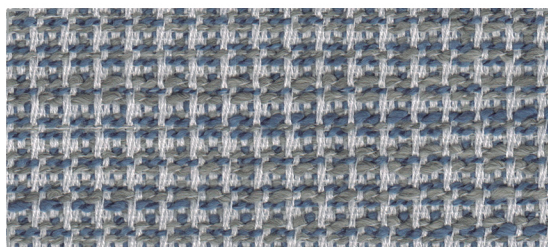
Dabas AT 117



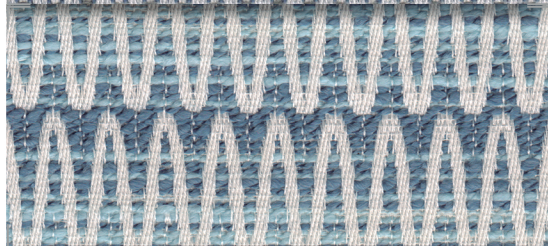
Dabas AT 204



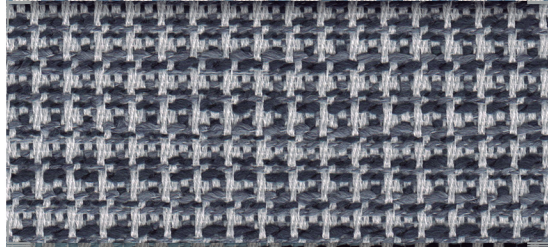
Dabas AT 1124



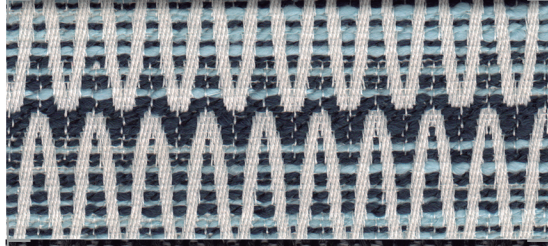
Kiel AT 119



Dabas AT 1129



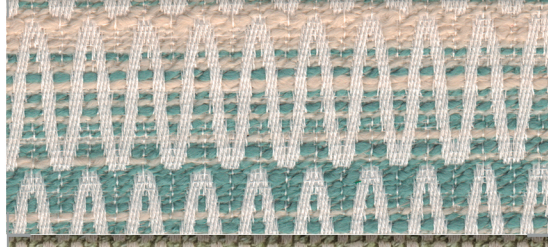
Kiel AT 120



Dabas AT 118



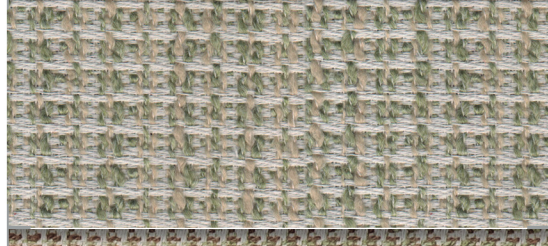
Kiel AT 121



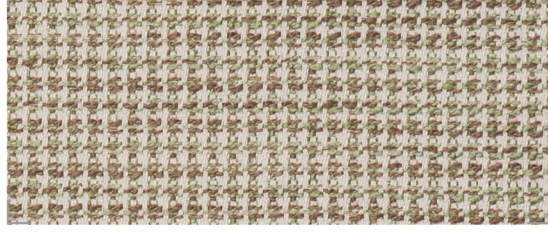
Breeze AT 202



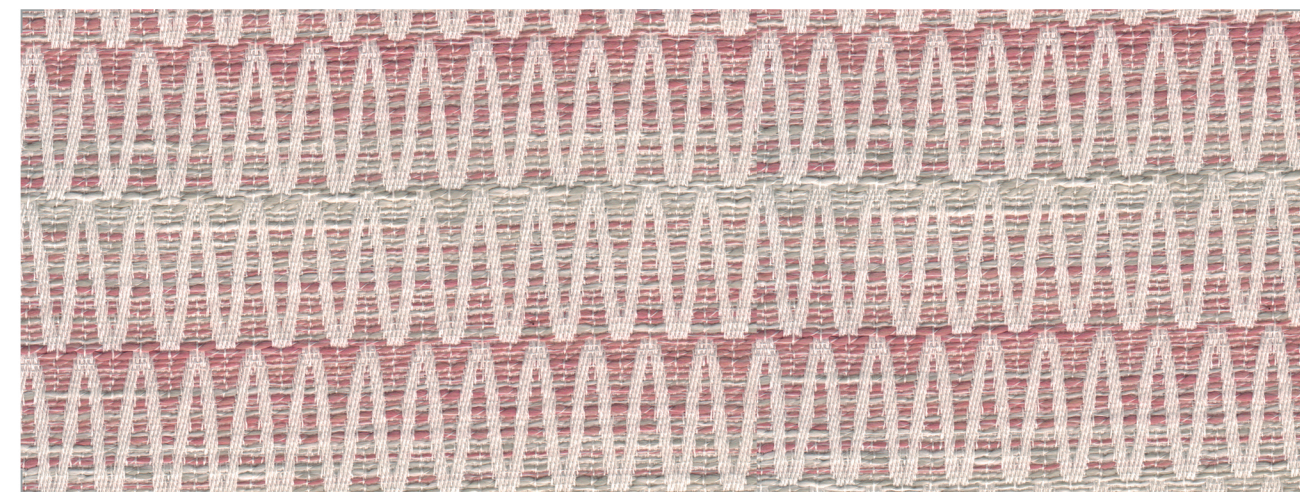
Dabas AT 102



Dabas AT 115



Kiel AT 123



Outdoor & Indoor fabrics

