





Tejido inteligente autolimpiable que cuida tu salud
Self-cleaning smart fabric that takes care of your health

| | | | | |
|--|---|--|--|--|
|  Tejido Autolimpiable Self-cleaning fabric |  Repele los malos olores It repels unpleasant odours |  Elimina los ácaros en los textiles It kills mites in fabrics |  Purifica el aire It purifies air |  Antiestático Antistatic |
|  Elimina suciedad y manchas orgánicas solo con la luz del sol It removes organic dirt and stains just with sunlight |  Elimina hongos, bacterias y virus It eliminates fungi, bacteria and viruses |  Protección UV UV protection |  Hidrófugo water repellent |  Tejido muy resistente, evita la degradación y la decoloración Highly-durable fabric that prevents degradation and fading |

ARTÍCULO / ARTICLE
RICH

| Mantenimiento Fácil | | Easy Care | |
|---------------------|---|--|--|
| Hilo: | 100% Acrílico tintado en masa | Yarn: | 100% Acrylic solution dyed |
| Peso x m²: | 451 gr (± 10%) | Weight x sqm: | 451 gr (± 10%) |
| Urdimbre: | 30 Hilo x cm NM 2/40000 | Warp: | 30 yarns x cm NM 2/40000 |
| Trama: | 9 Pasadas x cm NM 1/3000 | Weft: | 9 yarns x cm NM 1/3000 |
| Martindale: | 30.000 ciclos | Martindale: | 30.000 cycles |
| Columna de agua: | 150ml | Water column: | 150ml |
| Acabados: | Repelente al agua con tecnología nanopartículas Anti bacterias. Anti moho. | Finishes: | Water repellent with nanoparticle technology Anti bacteria Anti mold |
| Tratamientos: | Inhibición activo de virus (covid-19) Autolimpieza Purificador del aire eliminando contaminación Protección UV Eliminación de olores Efecto bactericida Antiestático |     | Active inhibition of viruses (covid-19) Self-cleaning Air purifier eliminating pollution UV protection Odor elimination Bactericide effect Antistatic |

| Análisis | | Analysis | |
|--|---|--|--|
| Ancho Pieza | 140 cm | Width of Roll | 140 cm |
| Largo Pieza | 45 m | Length of roll | 45 m |
| Repelencia al Aceite UNE-ISO14419: 2010 | 6 Sobre un máximo de 8 | Oil repellence UNE-ISO14419: 2010 | 6 over a maximum of 8 |
| Repelencia al Agua Método M test II | 10 Sobre un máximo de 10 | Water Repellence M test II | 10 over a maximum of 10 |
| Solidez del Color al Agua clorada (100 mg x litro) UNE EN ISO 105 E 03 | 5 Sobre un máximo 5 | Colour fastness to Chloride water (100 mg x litre) UNE EN ISO 105 E 03 | 5 over a maximum of 5 |
| Solidez del Color al Agua de Mar UNE EN ISO 105 E 02 | 5 Sobre un máximo 5 | Colour fastness to Sea Water UNE EN ISO 105 E 02 | 5 over a maximum of 5 |
| Solidez de las texturas a la luz UNE EN ISO 13934 105 B | 7/8 Sobre un máximo de 8 (Escala de Azules) 4/5 Sobre un máximo de 5 (Escala Grises) | Colour fastness to light UNE EN ISO 13934 105 B | 7/8 over a maximum of 8 (Blue Scale) 4/5 over a maximum of 5 (Grey Scale) |

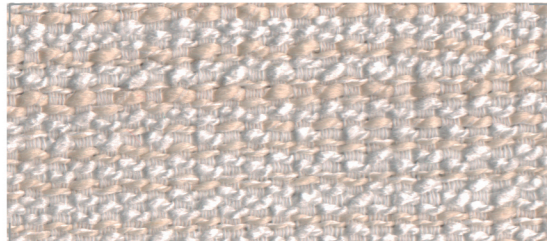
ARTÍCULO / ARTICLE
RICH
 outdoor & indoor fabrics

ecoplen
 El tejido inteligente que se limpia solo

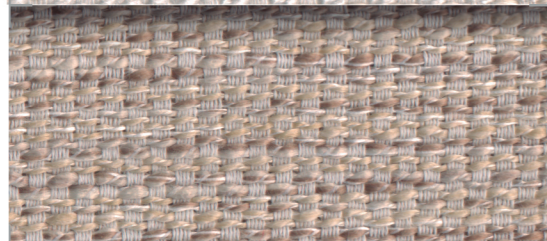


ARTÍCULO / ARTICLE
RICH
 outdoor & indoor fabrics

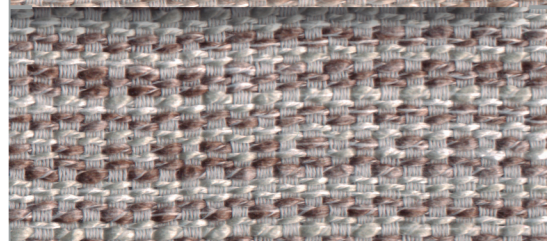
Rich
AT 145



Rich
AT 150



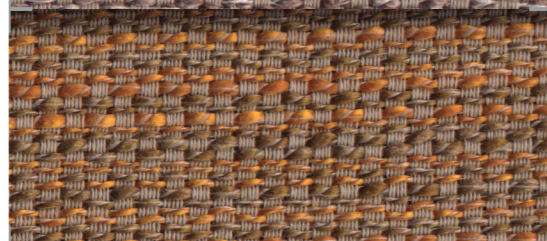
Rich
AT 147



Rich
AT 212



Rich
AT 202



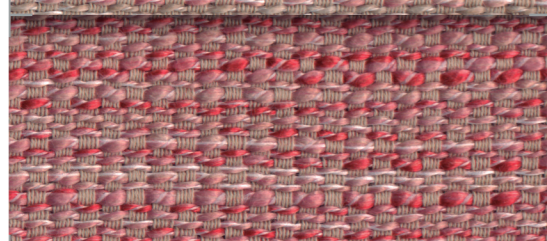
Rich
AT 141



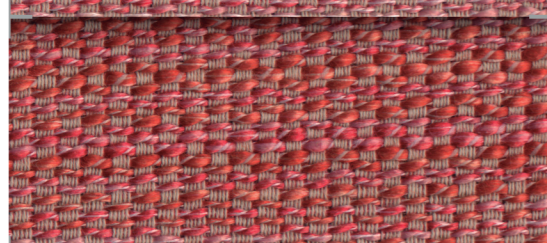
Rich
AT 204



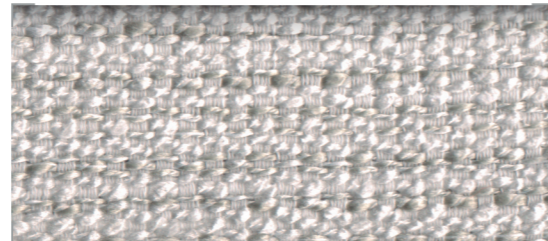
Rich
AT 205



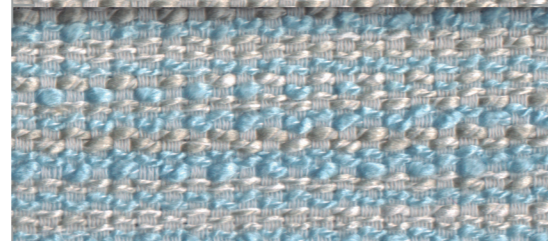
Rich
AT 206



Rich
AT 146



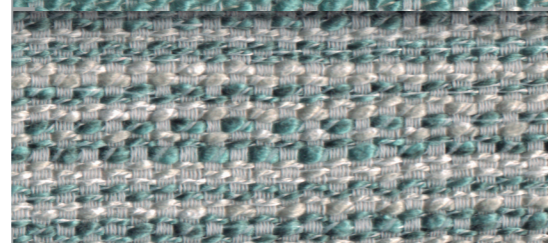
Rich
AT 144



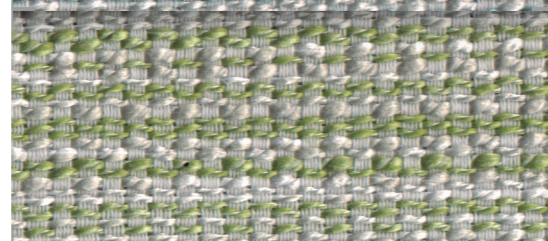
Rich
AT 143



Rich
AT 142



Rich
AT 140



Rich
AT 209



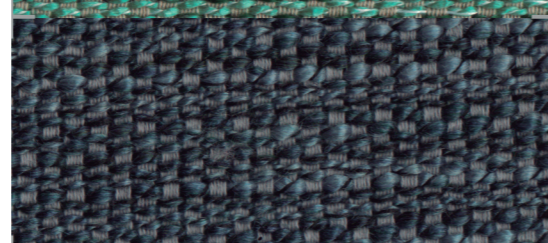
Rich
AT 207



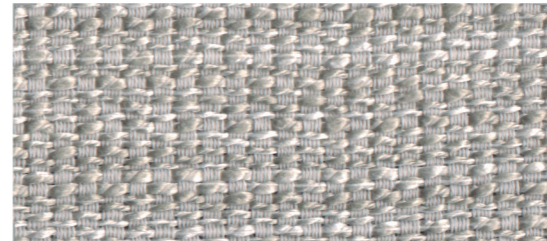
Rich
AT 208



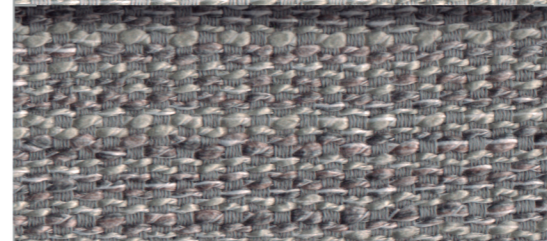
Rich
AT 340



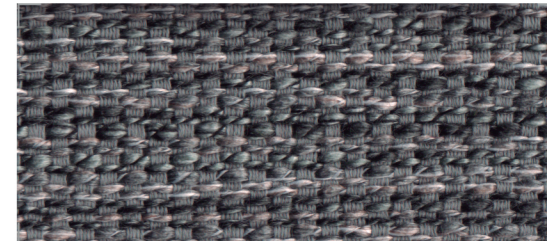
Rich
AT 148



Rich
AT 342



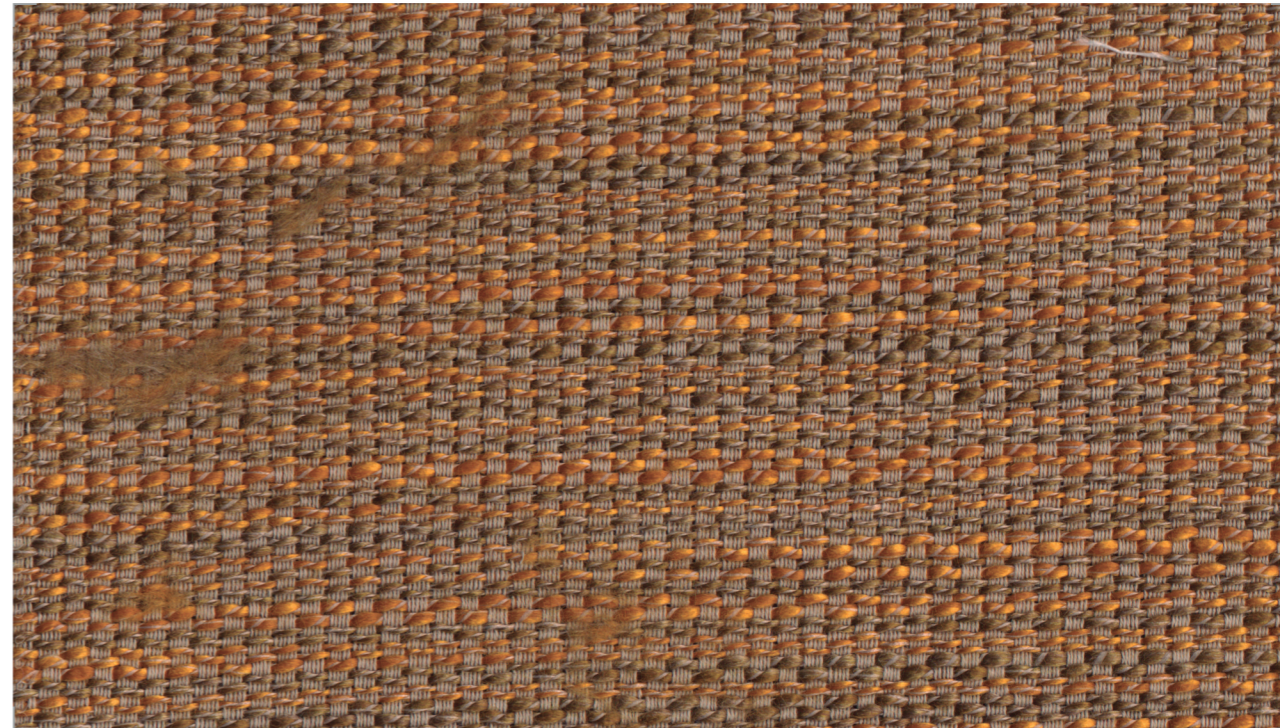
Rich
AT 343



Rich
AT 344



Rich
AT 202



Outdoor & Indoor
fabrics

