

Mantenimiento Fácil /Easy Care



REF.: XÉNON

<p>XÉNON Hilo: 100% Acrílico Peso x m²: 275gr ± 10% XÉNON 100% Impermeable Hilo: 100% Acrílico Peso x m²: 335gr ± 10% Urdimbre: 31 Hilos x cm NM 2 / 40.000 Trama: 19 Pasadas x cm NM 2 / 40.000</p> <p>Acabado: Repelente al Agua, Anti-bacterias, Anti-moho Martindale: 30.000 - 35.000 ciclos Columna de agua: 150 ml.</p> <p>Acabado 100% Impermeable Repelente al Agua, Anti-bacterias, Anti-moho Laminado PU 100% Impermeable</p>	<p>XÉNON Yarn: 100% Acrylic Weight x sqm: 275 gr ± 10% XÉNON 100% Waterproof Yarn: 100% Acrylic Weight x sqm: 335 gr ± 10% Warp: 31 Yarns x cm NM 2 / 40.000 Weft: 19 Yarns x cm NM 2 / 40.000</p> <p>Finishing: Water Repellent, Anti-bacterial, Anti-mold Martindale: 30.000 - 35.000 cycles Column Water: 150 ml.</p> <p>Finishing 100% Waterproof Water Repellent, Anti-bacterial, Anti-mold Film PU 100% Waterproof</p>
---	--

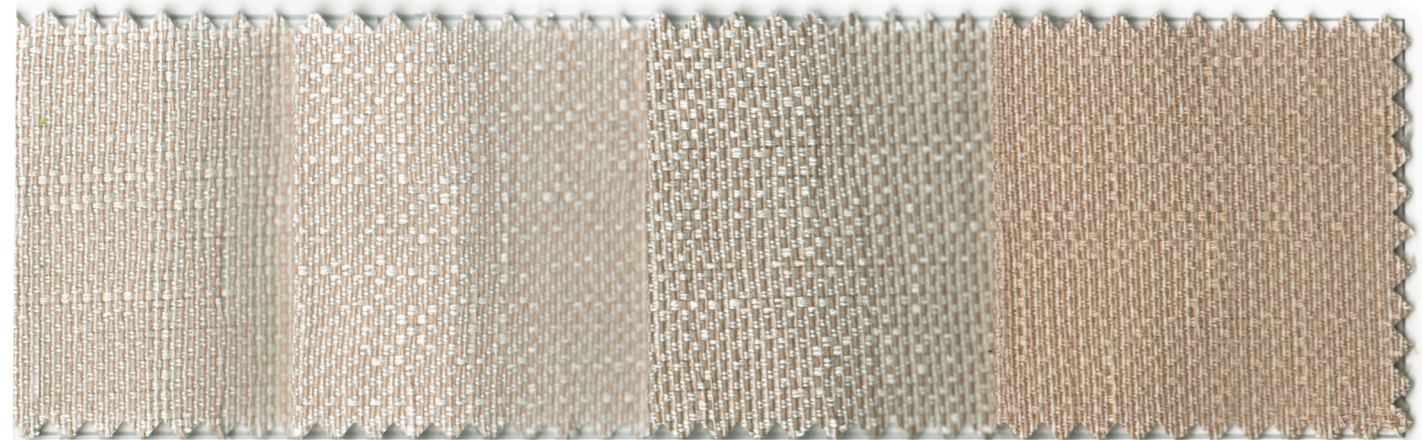
ANÁLISIS / ANALYSIS

Ancho Pieza: Roll Width	140 cm
Largo Pieza: Roll Width	50 cm
Repelencia al Aceite: Oil Repellency: UNE-ISO 14419:2010	6 sobre un máximo de 8 6 over a maximum of 8
Repelencia al Agua: Water Repellency: Método M Test II	10 sobre un máximo de 10 10 over a maximum of 10
Solidez del Color al Agua Clorada: Colour Fastness to Chloride Water: (100 mg x litro/litre) UNE EN ISO 105 E 03	5 sobre un máximo de 5 5 over a maximum of 5
Solidez del Color al Agua de Mar: Colour Fastness to Sea Water: UNE EN ISO 105 E 02	5 sobre un máximo de 5 5 over a maximum of 5
Solidez de las Texturas a la Luz: Colour Fastness to Light: UNE EN ISO 13934 105 B	7/8 sobre un máximo de 8 (Escala de azules) 7/8 over a maximum of 8 (Blue Scale) 4/5 sobre un máximo de 5 (Escala de grises) 4/5 over a maximum of 5 (Grey Scale)

Fabricado en España
Made in Spain



COLECCIÓN XÉNON
www.atenzza.com

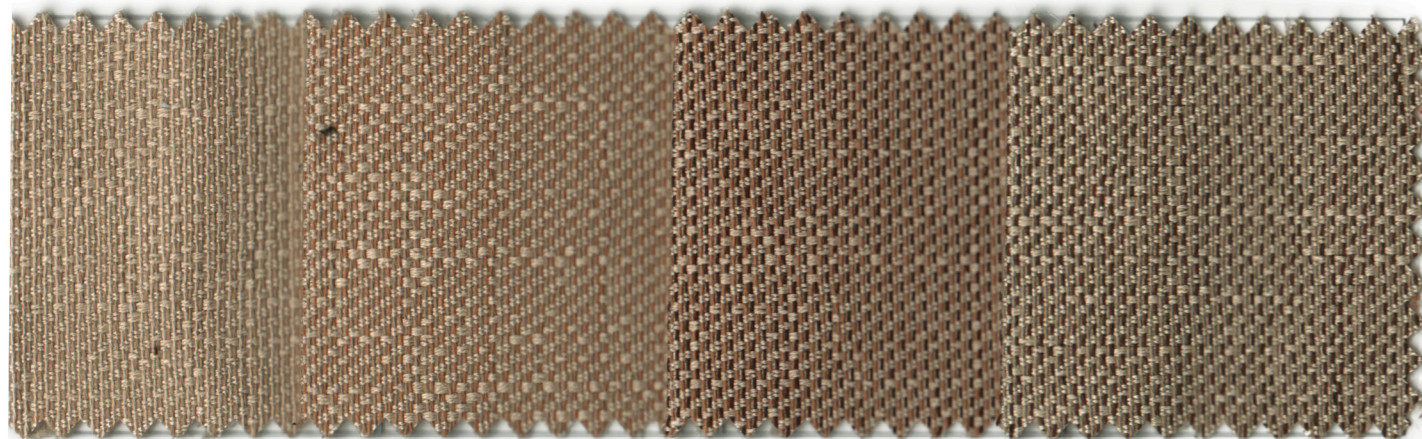


001

002

003

004

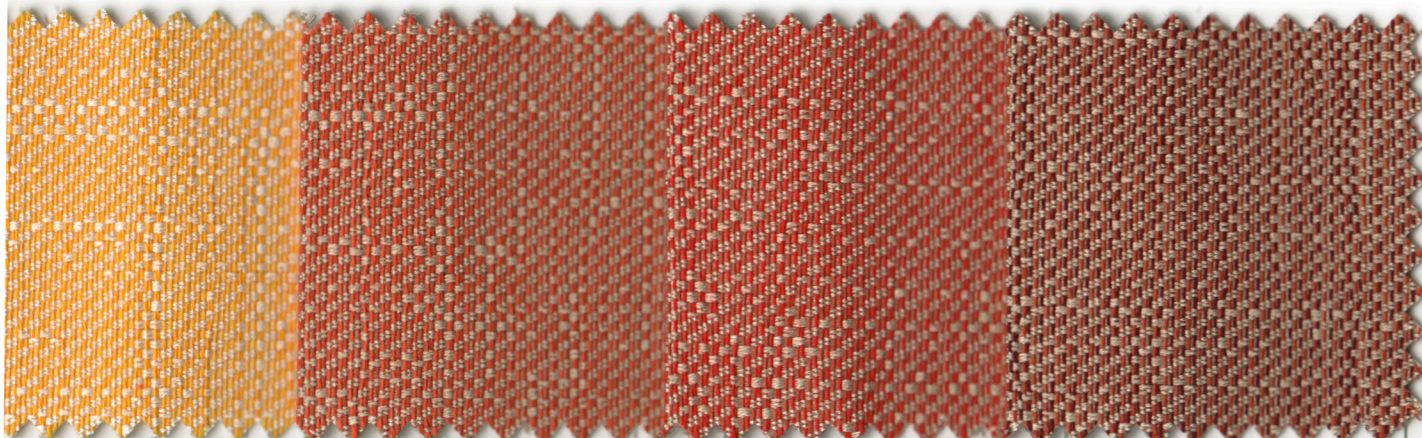


005

006

007

008

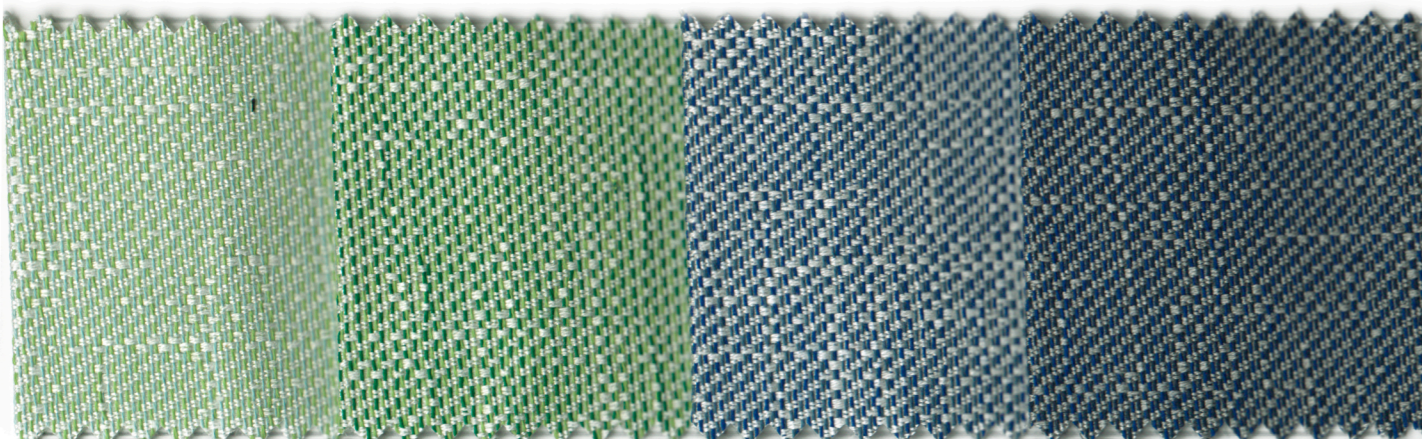


009

010

011

012



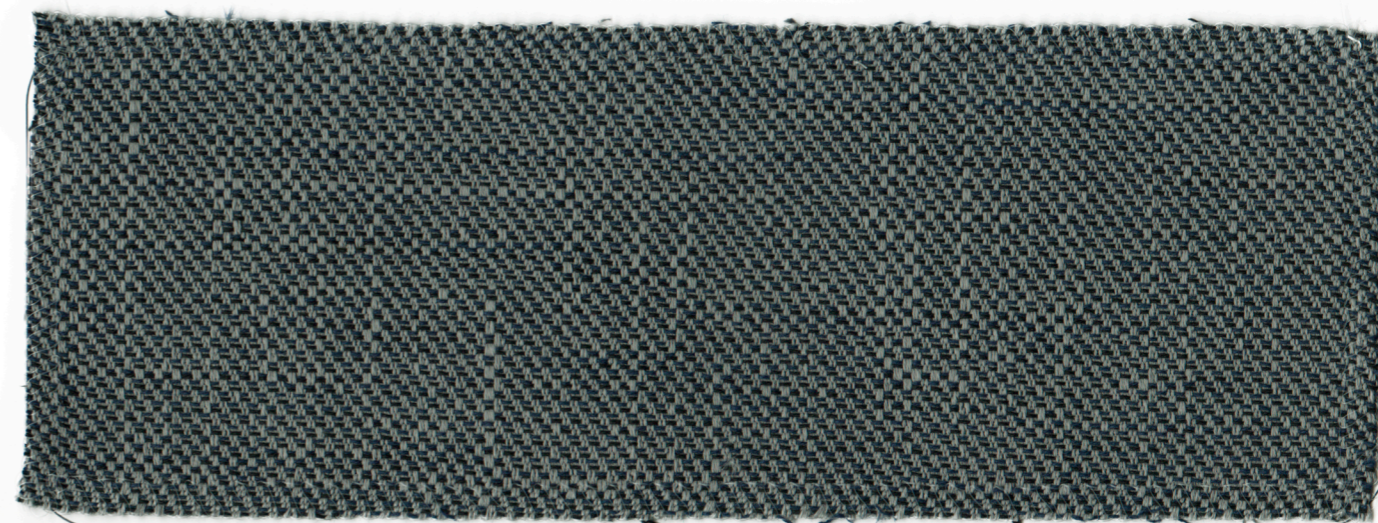
013

014

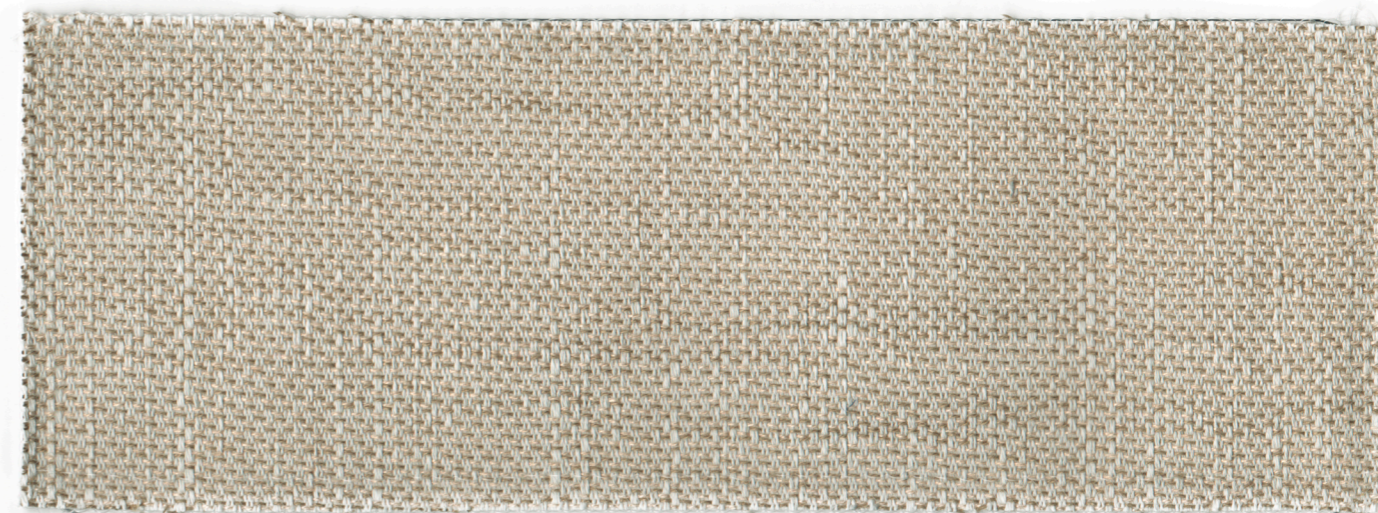
015

016

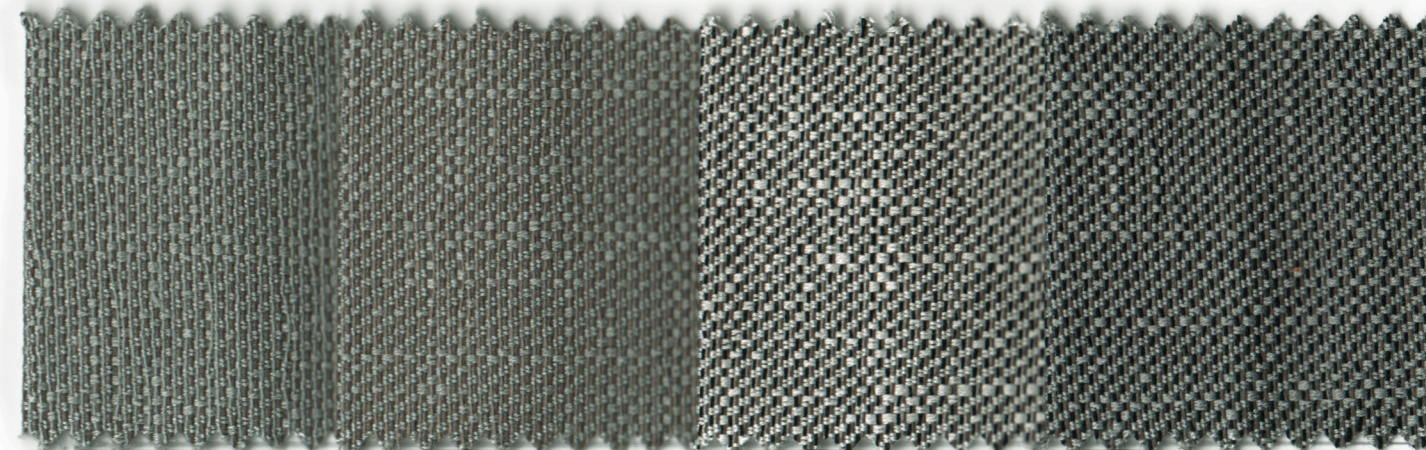
XÉNON



AT017



Muestra Waterproof



018

019

020

021